

---

# Card12

Hardware Version 1.1

## User Manual

June 25 2008

---

Copyright (C)2003-2008 by  
ELMICRO Computer GmbH & Co. KG  
Hohe Str. 9-13 D-04107 Leipzig, Germany  
Tel.: +49-(0)341-9104810  
Fax: +49-(0)341-9104818  
Email: leipzig@elmicro.com  
Web: <http://elmicro.com>

This manual and the product described herein were designed carefully by the manufacturer. We have made every effort to avoid mistakes but we cannot guarantee that it is 100% free of errors.

The manufacturer's entire liability and your exclusive remedy shall be, at the manufacturer's option, return of the price paid or repair or replacement of the product. The manufacturer disclaims all other warranties, either expressed or implied, including but not limited to implied warranties of merchantability and fitness for a particular purpose, with respect to the product including accompanying written material, hardware, and firmware.

In no event shall the manufacturer or its supplier be liable for any damages whatsoever (including, without limitation, damages for loss of business profits, business interruption, loss of business information, or other pecuniary loss) arising out of the use of or inability to use the product, even if the manufacturer has been advised of the possibility of such damages. The product is not designed, intended or authorized for use in applications in which the failure of the product could create a situation where personal injury or death may occur. Should you use the product for any such unintended or unauthorized application, you shall indemnify and hold the manufacturer and its suppliers harmless against all claims, even if such claim alleges that the manufacturer was negligent regarding the design or implementation of the product.

Product features and prices may change without notice.

All trademarks are property of their respective holders.

---

---

# Contents

---

1. Overview	2
Technical Data	2
Package Contents	3
2. Quick Start	4
Schematic Diagram	4
3. Parts Location Diagram	5
4. Jumpers and Solder Bridges	6
Jumpers	6
Solder Bridges	6
5. Mechanical Dimensions	8
6. Application Hints	9
Behaviour after Reset	9
Startup Code	9
Important Notice: VFP-Pin of the Controller	10
Additional Information on the Web	10
7. Monitor Program TwinPEEKs	11
Serial Communication	11
Autostart Funktion	11
Redirected Interrupt Vectors	11
8. Monitor Commands	13
9. Memory Map	15

# 1. Overview

---

Card12 is an easy to use, credit card-sized Controller Module based on a Motorola HC12 Microcontroller. The Card12 Controller Module provides an easy way to evaluate the Microcontroller. It is a cheap, off-the-shelf solution for low to mid volume series applications.

An MC912D60A MCU is used on the Card12.D60A module. The module can also be ordered with an MC912DG128A MCU installed. This version is labelled Card12.DG128A.

## Technical Data

---

- Motorola 16 Bit Microcontroller MC912D60A with TQFP-112 package
- 16 MHz external clock, 8 MHz bus clock
- 60 KB Flash Memory
- 2 KB RAM
- 1 KB EEPROM
- 8 Channel 16 Bit Timer with Input Capture / Output Compare
- 16 Channel 10 Bit A/D-Converter
- 2 Channel SCI with RS232 Transceiver (MAX232A)
- 4 Channel PWM
- Synchronous serial Interface SPI
- COP Watchdog, Clock Monitor
- CAN 2.0A/B bus interface with CAN driver (PCA82C250)
- Reset controller for Power Monitoring
- up to 80 free I/O-Lines
- all I/O-Lines are available via header connectors on the edge of the board
- mechanical dimensions: 54mm x 86mm (approx. 2.1" x 3.4")
- 5V Power Supply (additional 12V not anymore required for Flash-Programming)
- typ. power consumption: 50 mA

### **Extended Features of Card12.DG128A:**

- Motorola 16 Bit Microcontroller MC912DG128A
- 128 KB Flash Memory
- 8 KB RAM
- 2 KB EEPROM
- two CAN-Interfaces (1x incl. driver, 1x TTL)

### **Package Contents**

---

- Controller Module with MC912D60A (Card12.D60A) or with MC912DG128A (Card12.DG128A)
- TwinPEEKs Monitor Program (in the Flash Memory of the MCU)
- RS232 Cable (Sub-D9)
- two 50-pin header connectors plus one power supply connector
- Hardware Manual (this document)
- CD-ROM with Assembly Software, several Data Sheets, HC12 Reference Manual, Software Examples, C-Compiler Demo Version etc.

## 2. Quick Start

---

As no one likes to read lengthy manuals, we will summarize the most important things in the following section. If you need any additional information, please refer to the more detailed sections of this manual.

Here is how you can start:

- Please check the board for any damage due to transportation
- Connect the Controller Module via RS232 to a PC. The connection between Interface SER0 (ST3) on the Card12 and the PC is simply made using the flat cable which is in the box.
- On the PC, start a Terminal Program. An easy to use Terminal Program is OC-Console, which is available at no charge from our Website!
- Select a baudrate of 19200 Bd. Disable all hardware or software protocols.
- Connect a (stabilized!) Power supply, for instance at this point: Ground on ST7 Pin 2 / +5V on ST7 Pin 1
- But **at first**: double-check voltage and polarity!
- Once powered up, the Monitor Program starts and displays a short message. The Prompt appears and now the Module is waiting for your commands.

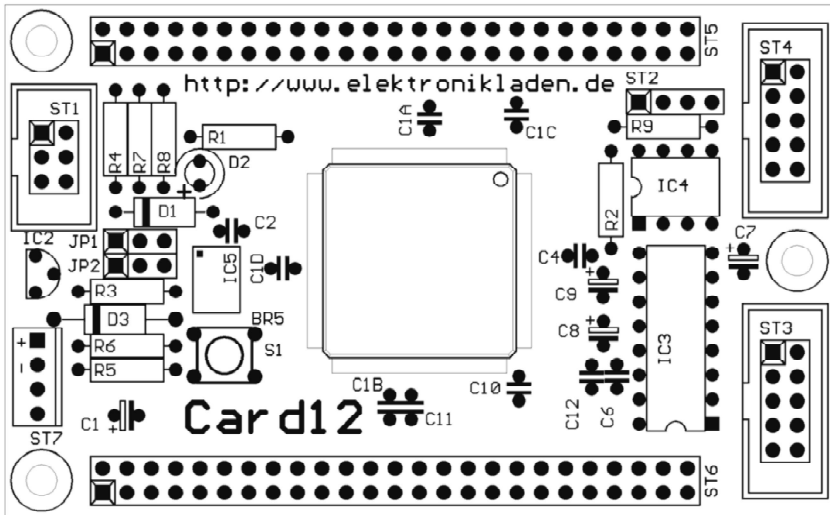
We hope you will enjoy working with the Card12 Controller Module!

### Schematic Diagram

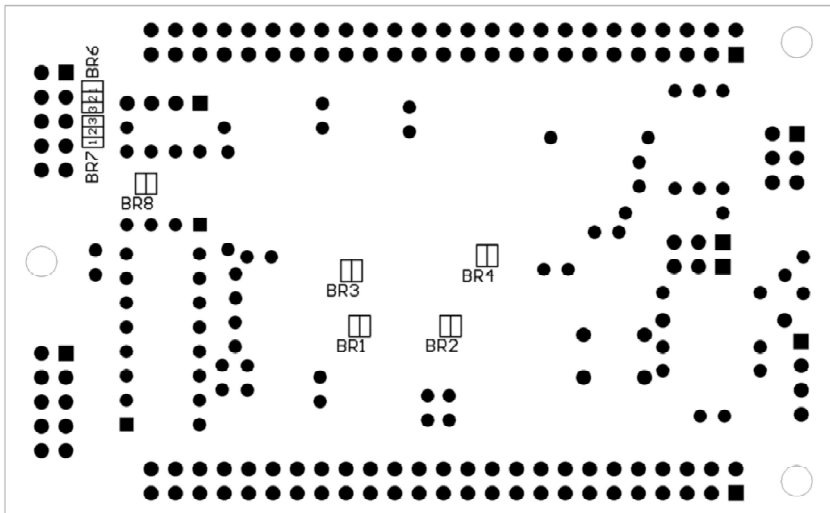
---

To ensure best visibility of all details, the Schematic Diagram of Card12 is provided as a separate document.

### 3. Parts Location Diagram



Place Plan - Component Side



Solder Bridges on the Back Side of the PCB

## 4. Jumpers and Solder Bridges

---

### Jumpers

---

#### JP1, JP2: MODA, MODB

1-2*	MODA/MODB=L (Single Chip Mode)
2-3	MODA/MODB=H (Expanded Wide Mode)

### Solder Bridges

---

#### BR1: VDDAD

open	external supply of VDDAD
closed*	connected to VCC on board

#### BR2: VRH

open	external supply of VRH
closed*	connected to VCC on board

#### BR3: VFP

open	VFP Pin not connected (D60A, DG128A!!)
closed	VFP Pin connected with Programming Power Supply Input (12V required for D60, DG128)

#### BR4: VSTBY (DG128 only)

open*	external supply of VSTBY
closed	connected to VCC on board

#### BR5: EXTAL

open	Clock (EXTAL) supplied externally
closed*	Oscillator IC5 delivers Clock (EXTAL)

\* = Factory Default Setting



**BR6, BR7: RS232 TxD/RxD Select (SER1)**

- 1-2\*      RS232 configured as "Device"  
(for connection to a PC etc.)
- 2-3      RS232 configured as "Host"  
(for connection to a serial LCD etc.)

**BR8: LCD Power Supply (SER1)**

- open\*     VCC not available on RS232 port SER1  
(standard Sub-D connector layout)
- closed    VCC available on RS232 port SER1  
(at Pin 9 of the Sub-D connector)

\* = Factory Default Setting

## 5. Mechanical Dimensions

---

The following table summarizes the mechanical dimensions of the Card12. The values provide a basis for the design of carrier boards etc. Please note: Always check all mechanical dimensions using the real hardware module!

The reference point (0,0) is located at the "south/west" corner of the PCB. The PCB is orientated horizontally, as shown in the Parts Location Diagram (see above).

All data for holes/drills (B) refer to the center of the hole/drill, connectors (ST) are referenced by pin 1.

	<b>X in Inch</b>	<b>Y in Inch</b>
ST1	0.150	1.575
ST2	2.600	1.700
ST3	3.150	0.675
ST4	3.150	1.825
ST5	0.400	1.900
ST6	0.400	0.100
ST7	0.133	0.725
B1	0.150	0.150
B2	0.150	1.950
B3	3.250	1.050
PCB	3.400	2.100

## 6. Application Hints

---

In this section some details will be given on how to program the HC12 in general and the Card12 Controller Module in particular.

Please be aware that, even if this manual can provide some specific hints, it is impossible to cover all kinds of knowledge and techniques required to design a microcontroller program. Please refer to the data sheets of the silicon vendors and to the manuals of the software tools you use to find additional help.

### Behaviour after Reset

---

As soon as the Reset input of the microcontroller is released, the MCU reads the Interrupt Vector at memory address \$FFFE/F and then jumps to the address found there.

In the default delivery condition of Card12, the Flash Boot Block of the MCU (\$E000-\$FFFF) contains the Monitor Program TwinPeeks. The reset vector points to the start of this Monitor Software. As a result, TwinPeeks will start immediately after reset.

To automatically start a user program instead of the Monitor, TwinPeeks contains a special Autostart feature. The Autostart feature can be activated by connecting two I/O-lines of the MCU (see section Monitor Program for details).

### Startup Code

---

Every Microcontroller firmware starts with a number of hardware initialization commands. For an MC912D60A/DG128A application program two issues have top priority: setting the Stack Pointer and disabling (or using) the COP Watchdog.

The following assembly lines show an example (which is actually derived from the starting sequence of the TwinPeeks Monitor):

```
main    lds  #StackPtr      ; Init Stack Pointer
        clr  COPCTL        ; Disable Watchdog
```

## **Important Notice: VFP-Pin of the Controller**

---

The members of the first HC12 generation (D60, DG128 etc.) need a Flash programming voltage of 12V (see data sheet!). On the Card12, this voltage can be supplied via the power supply connector ST7 or via the BDM connector ST1. The solder bridge BR3 must be closed.

The new A-types (D60A, DG128A), which started to become available in the middle of the year 2001, have a modified Flash memory module with internal generation of programming power. **Solder bridge BR3 on the Card12 must always be open for A-type MCUs! This is to protect Pin 97 of the MCU. If this Pin was to be exposed to 12V, the microcontroller could be destroyed!**

## **Additional Information on the Web**

---

Additional information about hard- and software of the Card12 Controller Module will be published on our Website, as it becomes available:

<http://elmicro.com/en/card12.html>

## 7. Monitor Program TwinPEEKs

---

Software Version 1.6

### Serial Communication

---

The monitor program TwinPEEKs communicates using the first RS232 interface ("SER0") at **19200 Baud**. The settings are: 8N1, no hardware or software handshake, no protocol.

### Autostart Function

---

After Reset the TwinPEEKs Monitor checks, whether Pins PH6 and PH7 are connected or not. If there is a connection the Monitor jumps to address \$8000 (*in the case of DG128(A): \$4000*). In this way it is possible to automatically start a user program without changing the Reset Vector, which resides in the protected Flash Boot Block area.

### Redirected Interrupt Vectors

---

The interrupt vectors reside at the end of the 64KB memory map, which falls in the area of the protected Flash Boot Block. In order to process interrupts of an application program, the interrupt vectors are redirected to a RAM area by the Monitor. The method is similar to the behaviour of the HC11 in Special Bootstrap Mode.

The user's application program installs an interrupt vector by placing a jump instruction at the RAM pseudo vector location.

Example: Follow these steps to use the SPI interrupt:

```
ldaa #$06          ; JMP Opcode
staa $07C7         ; SPI Pseudo Vector
ldd #isrFunc       ; Jump Address
std $07C8          ; SPI Pseudo Vector + 1
```

The following listing shows, which interrupt is redirected to which pseudo address in RAM by the monitor program:

```
FFC2 :                org $ffc2                ; 912D60 *and* 912DG128

FFC2 : 07A6           dc.w  RAMTOP-90           ; CGM LLH
FFC4 : 07A9           dc.w  RAMTOP-87           ; MSCAN Tx
FFC6 : 07AC           dc.w  RAMTOP-84           ; MSCAN Rx
FFC8 : 07AF           dc.w  RAMTOP-81           ; MSCAN Err
FFCA : 07B2           dc.w  RAMTOP-78           ; Pulse Accu B Overflow
FFCC : 07B5           dc.w  RAMTOP-75           ; MDCU
FFCE : 07B8           dc.w  RAMTOP-72           ; KWUG, KWUH
FFD0 : 07BB           dc.w  RAMTOP-69           ; MSCAN Wake Up
FFD2 : 07BE           dc.w  RAMTOP-66           ; ATD
FFD4 : 07C1           dc.w  RAMTOP-63           ; SCI1
FFD6 : 07C4           dc.w  RAMTOP-60           ; SCI0
FFD8 : 07C7           dc.w  RAMTOP-57           ; SPI
FFDA : 07CA           dc.w  RAMTOP-54           ; Pulse Accu Input Edge
FFDC : 07CD           dc.w  RAMTOP-51           ; Pulse Accu Overflow
FFDE : 07D0           dc.w  RAMTOP-48           ; Timer Overflow
FFE0 : 07D3           dc.w  RAMTOP-45           ; TC7
FFE2 : 07D6           dc.w  RAMTOP-42           ; TC6
FFE4 : 07D9           dc.w  RAMTOP-39           ; TC5
FFE6 : 07DC           dc.w  RAMTOP-36           ; TC4
FFE8 : 07DF           dc.w  RAMTOP-33           ; TC3
FFEA : 07E2           dc.w  RAMTOP-30           ; TC2
FFEC : 07E5           dc.w  RAMTOP-27           ; TC1
FFEE : 07E8           dc.w  RAMTOP-24           ; TC0
FFF0 : 07EB           dc.w  RAMTOP-21           ; RTI
FFF2 : 07EE           dc.w  RAMTOP-18           ; IRQ
FFF4 : 07F1           dc.w  RAMTOP-15           ; XIRQ
FFF6 : 07F4           dc.w  RAMTOP-12           ; SWI
FFF8 : 07F7           dc.w  RAMTOP-9            ; Illegal Opcode
FFFA : 07FA           dc.w  RAMTOP-6            ; COP Fail
FFFC : 07FD           dc.w  RAMTOP-3            ; Clock Monitor Fail
FFFE : F000           dc.w  main                ; Reset
```

This table is valid for both D60(A) and DG128(A), despite the fact that the highest used RAM address is \$3FFF with the DG128(A) compared to \$07FF with the D60(A). In addition, the DG128(A) has five additional interrupt vectors:

```
FFB8 :                org $ffb8                ; 912DG128 *only!*

FFB8 : 3F97           dc.w  RAMTOP-105          ; MSCAN1 Tx
FFBA : 3F9A           dc.w  RAMTOP-102          ; MSCAN1 Rx
FFBC : 3F9D           dc.w  RAMTOP-99          ; MSCAN1 Err
FFBE : 3FA0           dc.w  RAMTOP-96          ; MSCAN1 Wake Up
FFC0 : 3FA3           dc.w  RAMTOP-93          ; IIC
```

---

## 8. Monitor Commands

---

TwinPEEKs Command Summary:

### **Dump: D (adr1 (adr2))**

- Display Memory from Address "adr1" to "adr2" ("adr2" is not included)

### **Edit: E (addr (byte))**

- edit memory starting at address "addr"
- If "byte" is specified, this "byte" is simply written to "addr". Otherwise the command is executed in an interactive mode.

### **Fill: F adr1 adr2 byte**

- Fills the memory area from "adr1" to "adr2" ("adr2" not included) with the value of "byte"

### **Goto: G (addr)**

- Jumps to a user program starting at "addr"

### **Help: H**

- Command Summary

### **Load: L (offs)**

- Load an executable program in Motorola S-Record format (S1 type as well as S2 type records are supported)
- The sending terminal program (PC side) must be able to wait for an acknowledge (\*) after each line!
- If "offs" is specified, every address in the S-Record file is moved by an offset.

### **Move: M adr1 adr2 adr3**

- Copy memory starting at "adr1" and ending at "adr2"-1 to "adr3".

**Page: P (page)**

- Select a memory page ("page"=0..7). This page will be visible in the paged area (\$8000 to \$BFFF = 16 KB).  
*DG128(A) only!*

**Bulk: X (array)**

- Erase the Flash Memory
- If "array" is \*not\* specified: erase the whole Flash Memory (excl. upper Boot Block)
- if "array" = 0: erase only the lower 28 KB Flash Array
- if "array" = 1: erase only the upper 32 KB Flash Array
- The Monitor (residing in the upper Boot Block) will \*not\* be erased, anyway. (to overwrite the Monitor code a BDM loader/programmer is required)  
*DG128(A) only: array = 0..3 (32 KB each)*



## 9. Memory Map

### Card12.D60A

Start	Ende	Belegung
\$0000	\$01FF	Control Registers
\$0200	\$07FF	1.5KB (of 2KB) RAM (the lower 0,5KB are hidden by the Control Registers) TwinPEEKs uses the top 512 bytes
\$0C00	\$0FFF	1KB EEPROM
\$1000	\$7FFF	28KB (lower) Flash Memory Array
\$8000	\$FFFF	32KB (upper) Flash Memory Array TwinPEEKs uses the top 8KB

### Card12.DG128A

Start	Ende	Belegung
\$0000	\$03FF	Control Registers
\$0800	\$0FFF	2KB EEPROM
\$2000	\$3FFF	8KB RAM TwinPEEKs uses the top 512 bytes
\$4000	\$7FFF	16KB Flash (equals page 6)
\$8000	\$BFFF	16KB Flash page 0 (any page 0..7, selectable by PPAGE)
\$C000	\$FFFF	16KB Flash (equals page 7) TwinPEEKs uses the top 8KB